

# JURONG LAKE GARDENS

---

National Gardens in the Heartlands

## DIY Guide

CHINESE GARDEN





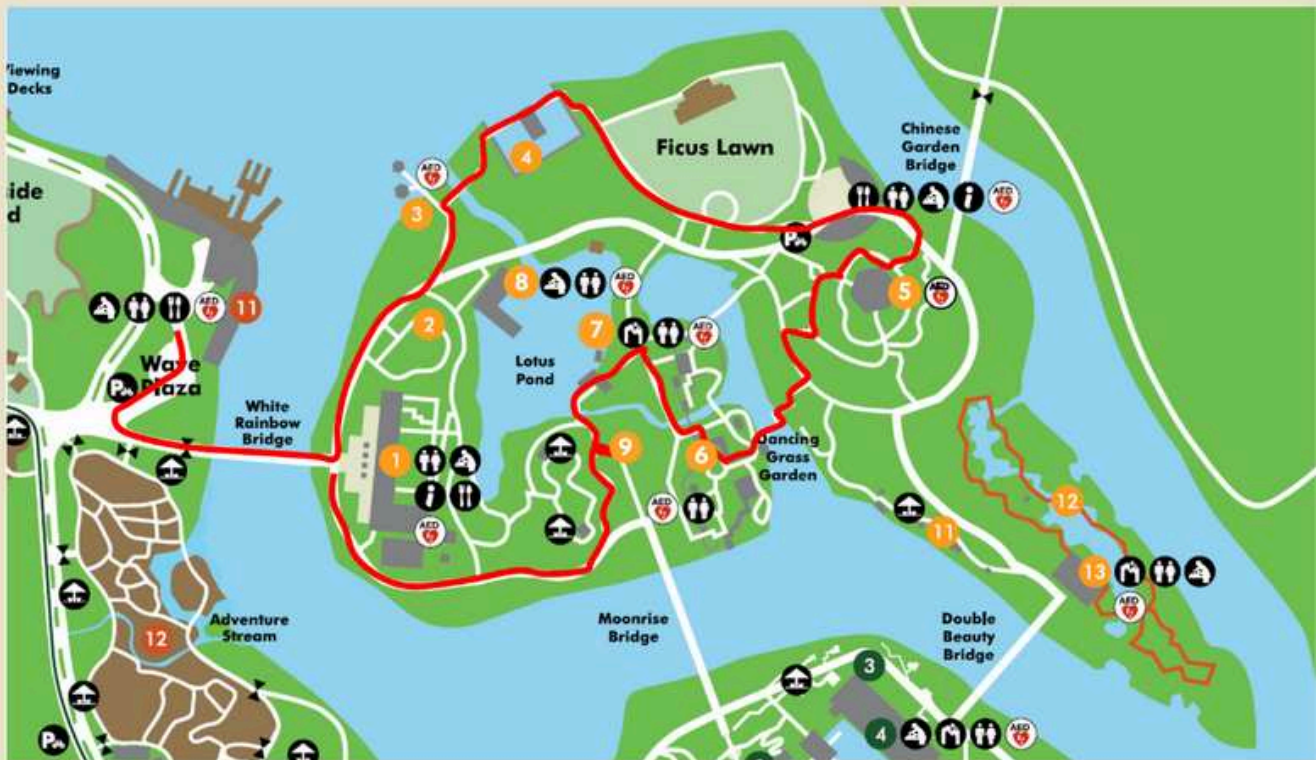
# Welcome to Chinese Garden!

Discover the beauty and serenity of the newly opened Chinese Garden, nestled within the heart of Jurong Lake Gardens. These tranquil spaces offer a perfect blend of traditional architecture and lush landscapes, inviting you to explore and connect with nature and culture. This self-guided tour will take you through the highlights of the garden, offering a peaceful retreat and an enriching experience. Whether you're here to discover the rich heritage behind the cultural attractions or simply enjoy the vibrant flora, the Chinese Garden provides a serene escape for all visitors.

# Chinese Garden

## Route Map:

- 1 Grand Arch
- 2 Edible Garden
- 3 Twin Pagoda
- 4 Water Wall Court
- 5 Cloud Pagoda
- 6 Bonsai Garden
- 7 Tea Pavilion
- 8 Stoneboat
- 9 Bamboo Grove & Waterfall



## How to get here:

**Car:** Park at the North Carpark

**Bus:** Take Bus 154 or 246 from Opp Lakeside Stn to Chinese Gdn bus stop. Upon alighting, turn left and walk towards Passion WaVe @ Jurong Lake Gardens (this is a 5 minute's walk)

# Checkpoint 1: Grand Arch



## Key Highlights:

The Grand Arch has been an iconic feature of the Chinese Garden since the garden first opened to the public in 1975. As a landmark at the entrance to the Chinese garden, it is captured in the memories of many tourists and Singaporean families who visited the gardens over the years. The White Rainbow Bridge and the Grand Arch are conserved in efforts to preserve these memories while the complex is further enhanced with a variety of facilities to enrich visitors' experiences.

The Main Arch building is also one of Chinese Garden's definitive landmark and an example of a classical Chinese arch building. The magnificent and grandiose form has made it very popular for picture-taking.

## What you can do here:

The plant factory (renamed Edible Gallery) and café feature edibles grown indoors and overlook the edible garden. Visitors can also participate in workshops and cooking demonstrations in the edible garden.



# Checkpoint 2: Edible Garden



## Key Highlights:

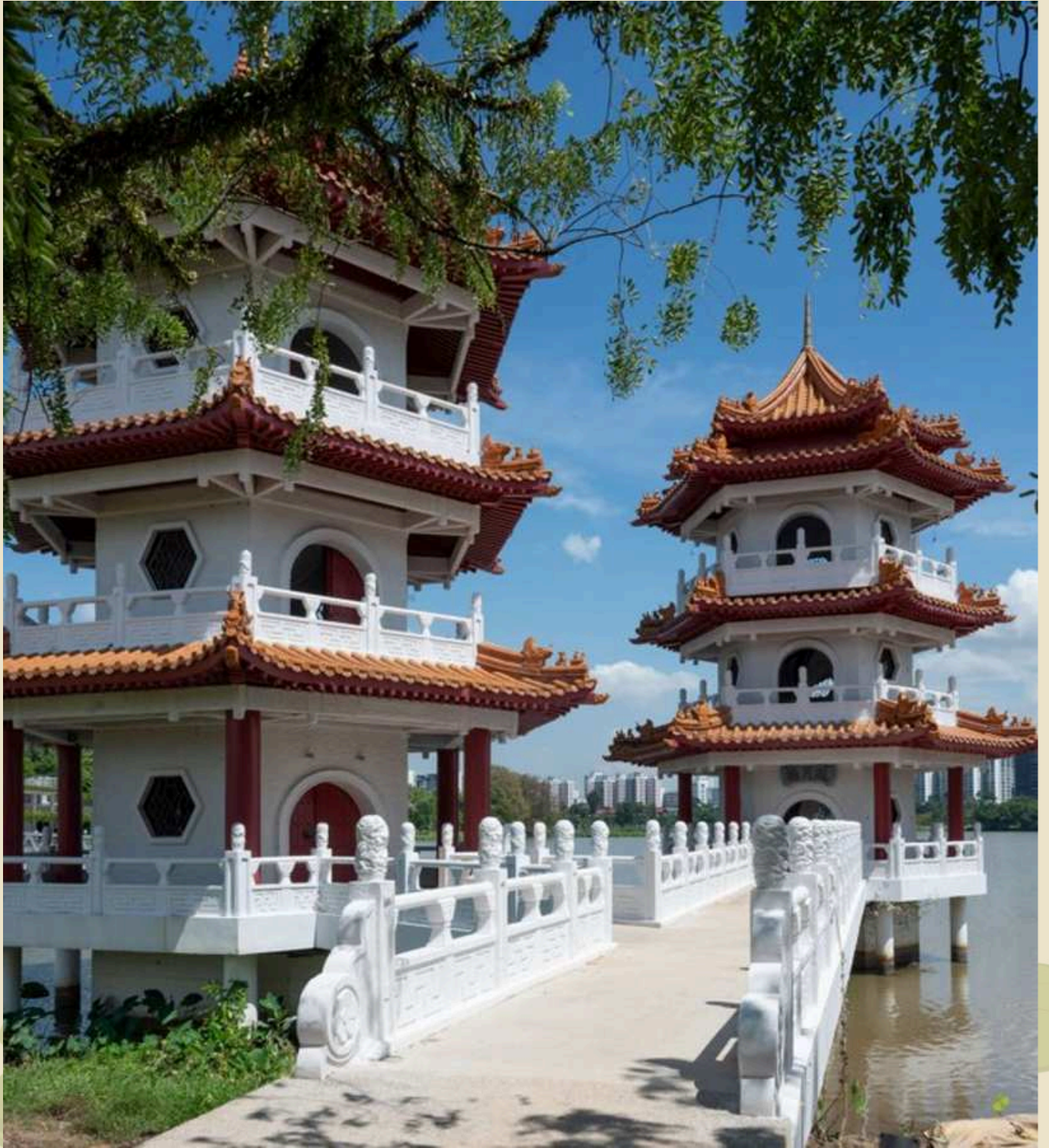
The Edible Garden showcases tropical vegetables and fruits in ornamental displays, featuring themes like a climber garden, herb garden, and fruit forest. Each space is thoughtfully curated to highlight the unique beauty and growth of these familiar plants.



## **Sustainability**

**The Edible Garden promotes food resilience through sustainable growing practices and highlights the benefits of local, self-sufficient food production. As you tour the newly renovated Chinese Garden, you'll see various edible plants, showcasing its commitment to sustainability and food resilience.**

# Checkpoint 3: Twin Pagoda



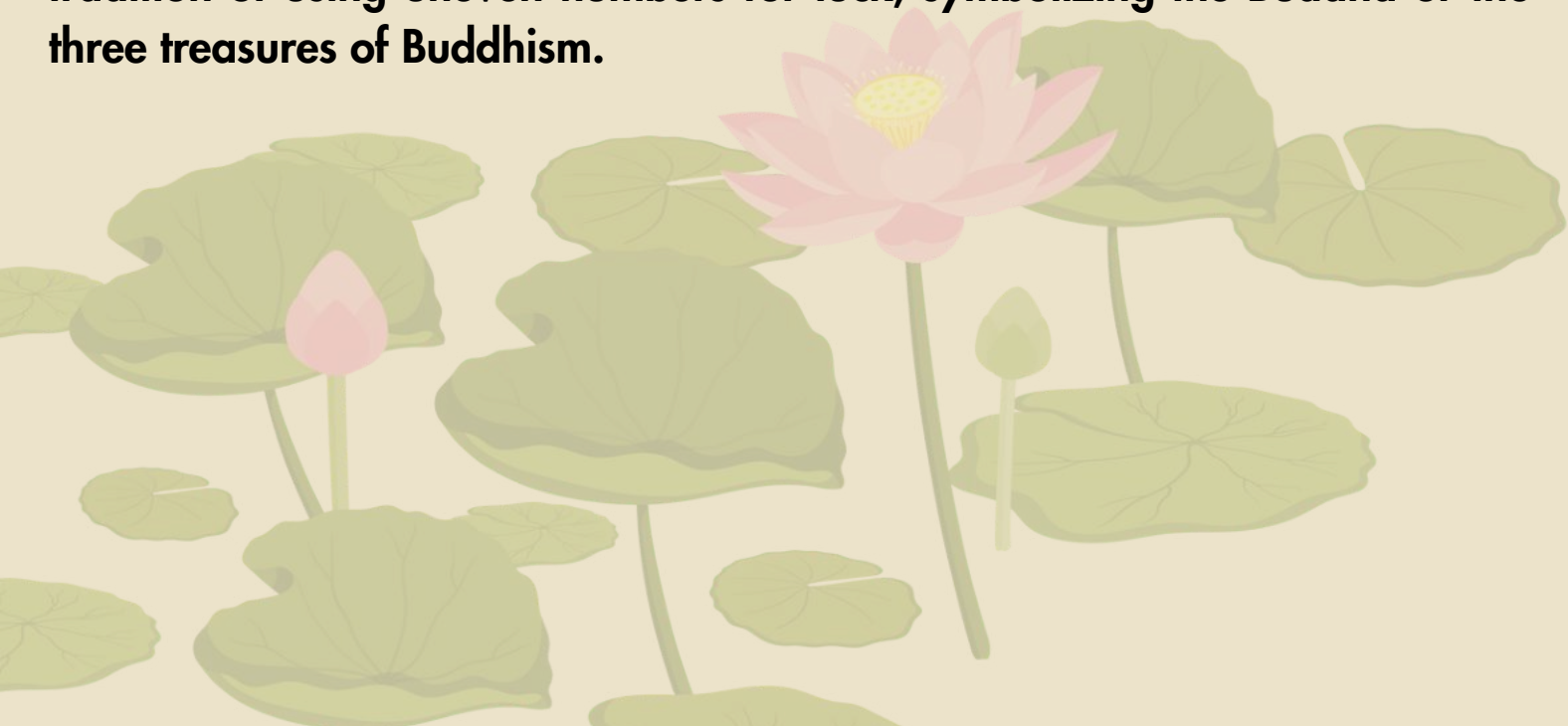


## Key Highlights:

The Twin Pagoda, Moon Receiving Tower (“Yeh Yueh Lou”, 延月楼), and Cloud Draping Tower (“Pi Yun Ge”, 披云阁) are replicas of Southern China’s Spring-Autumn Tower. These 3-storey towers, positioned opposite each other by the lakeside, exemplify classic Chinese architecture with internal spiral staircases and encircling balconies on each floor.

## Culture and Heritage

The design of the Twin Pagoda reflects the Yin and Yang principle: the broader Cloud Draping Tower (“Pi Yun Ge”, 披云阁) represents Yang (male), while the narrower Moon Receiving Tower (“Yeh Yueh Lou”, 延月楼) represents Yin (female). Both are three-storeys high, following the tradition of using uneven numbers for luck, symbolizing the Buddha or the three treasures of Buddhism.



# Checkpoint 4: Water Wall Court



## Key Highlights:

**Water Wall Court provides a serene, reflective experience with a pavilion where visitors can enjoy the moving water and views of Jurong Lake. Hidden until you turn a corner, the water wall transforms into a brilliant display of golden strings at sunset or under night lighting.**

# Checkpoint 5: Cloud Pagoda



## Key Highlights:

The Cloud Pagoda (“Ru Yun Ta”, 入云塔) has 3 main entry points, all leading to the Pagoda Platform which is aptly named Plateau overlooking Scenic spots (“Yun Tai Lan Sheng”, 云台揽胜). The “Yun Tai” (literally Cloud Terrace) is situated at the highest point of the Garden. From the top, you can enjoy a panoramic view of the surroundings. The Cloud Pagoda is also surrounded by the 12 Zodiac stone statues.

## Culture and Heritage

The seven-storey pagoda is believed to possess magical powers in Chinese tradition.

As the old Chinese saying goes, “one must climb higher to see further”, ascending the internal spiral staircase to the top allows visitors to experience both the breathtaking views and the pagoda’s symbolic significance.



# Checkpoint 6: Bonsai Garden



## Key Highlights:

The Suzhou-style Bonsai Garden, first opened in 1992, features bonsai from China, Taiwan, Japan, Southeast Asia, and Singapore, showcasing the art of cultivating miniature living sculptures. Inspired by the poetic freehand style of traditional Chinese landscape paintings, the garden captures the timeless beauty of Suzhou's classic gardens.

## **What you can do here:**

**The refreshed Bonsai Garden will feature indoor workshop spaces and displays looking out to the surrounding outdoor displays and the stream which cuts through the garden. The main entrance has an F&B outlet that offers visitors a place to rest and rejuvenate.**



# Checkpoint 7: Tea Pavilion



## Key Highlights:

The Tea Pavilion or “The Gallery of Tea Fragrance” (“Ming Xiang Xie”, 茗香榭) consists of three pavilions interconnected by a winding corridor, giving the appearance of floating on the waters of the Main Lake. This is inspired by the Summer Palace’s elaborate and winding gallery. This meandering design is a characteristic and graceful Chinese architectural feature.

As you approach the Tea Pavilion, you will see a stone inscribed with wordings inviting you to stay and enjoy the view. From here, you can see the Stoneboat moored at the Main Lake, watch fishes and tortoises swim, and enjoy the gentle breeze rustling through the bamboo.

## Culture and Heritage

During the Ming Dynasty, scholars established elegant tea pavilions near river springs and rock formations to inspire creativity. In these settings, they drank tea while burning incense, playing the zither, and appreciating paintings. This practice led to the development of tea studies focused on tea quality, teapot appreciation, water usage, and brewing methods.





# Checkpoint 8: Stoneboat



## Key Highlights:

Moored on the banks of the Main Lake in the Chinese Garden, the picturesque Stoneboat ("Yao-Yue Fang", 邀月舫) is named after the ancient saying, "The chamber along the waterside always gets the moon earlier." Inspired by the Peking style, the Stoneboat's design and materials were adapted to create a more beautiful and grandiose structure.

The Stoneboat has two floors: the ground floor (23.5m x 8.5m) and an air-conditioned upper floor (17m x 8.5m). It holds nostalgic value for the older generations of Singaporeans, as it once served as a branch of the Registrar of Marriages.

# Checkpoint 9: Bamboo Grove & Waterfall

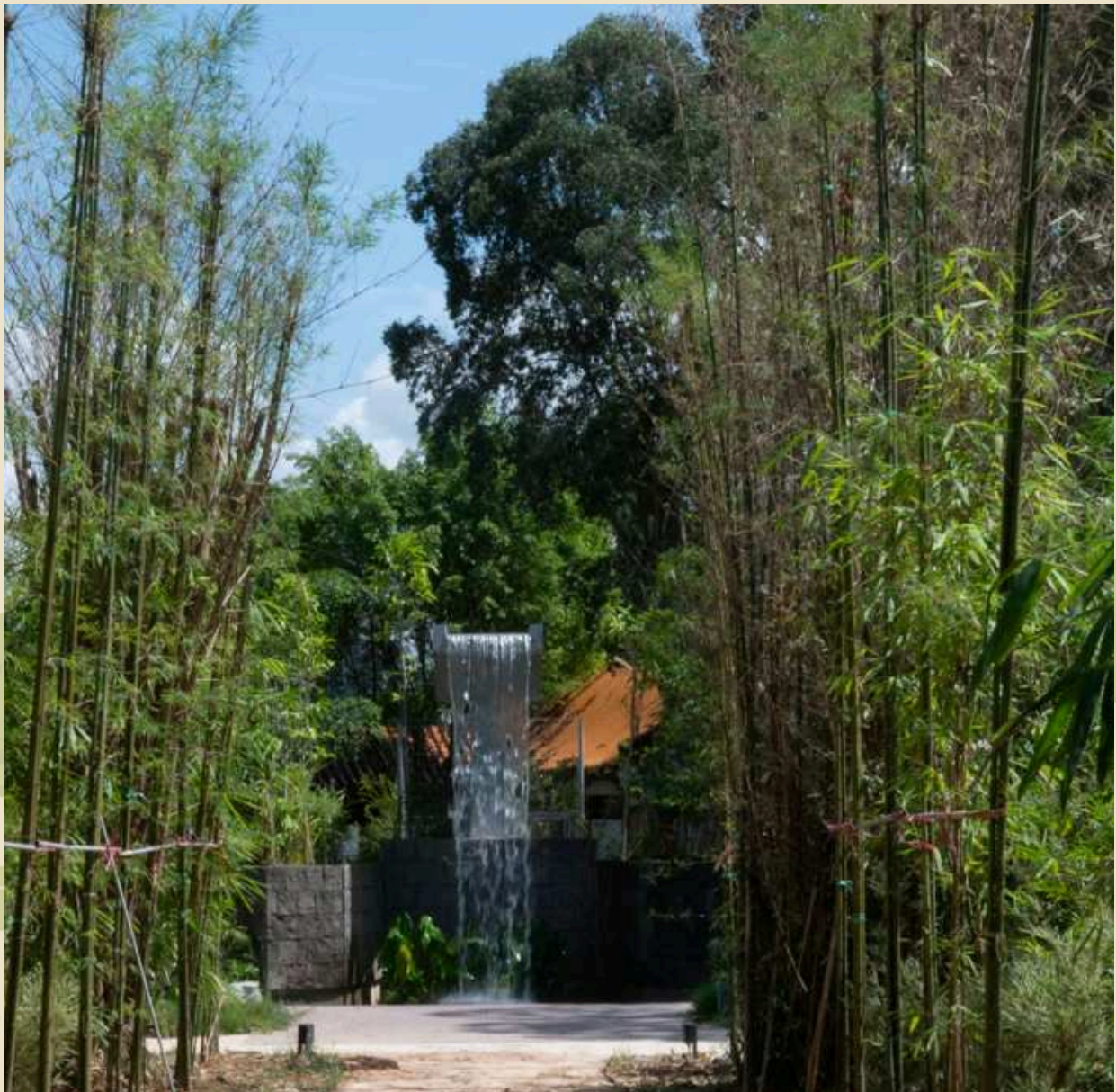


## Key Highlights:

Fragrant flowers are planted at the cascading waterfall so that the wind will always carry an aroma into the bamboo tunnel; This interplay of wind, fragrance, and sound creates a symphony for the senses, transcending the physical.

# Culture and Heritage

In traditional Chinese culture, bamboo symbolizes moral integrity, modesty, loyalty, and elegance. It is a major theme in Chinese painting, calligraphy, and poetry. Bamboo is an important part of traditional Chinese culture and daily life, and also played a vital role in Chinese civilization, being used historically for products like arrowheads, baskets, writing scrolls, pens, paper, boats, shoes, food (shoots), and construction materials.





# Thank you for visiting us!

Share the joy of your visit online!  
We look forward to welcoming you again at Jurong  
Lake Gardens!



Share your love for nature and animals at  
**#NParksBuzz #AnimalBuzzSG**

For any enquiries, please contact:  
**JurongLakeGardens@nparks.gov.sg**

